

What went wrong with **ARTIFICIAL INTELLIGENCE**

"The development of full artificial intelligence could spell the end of the human race."

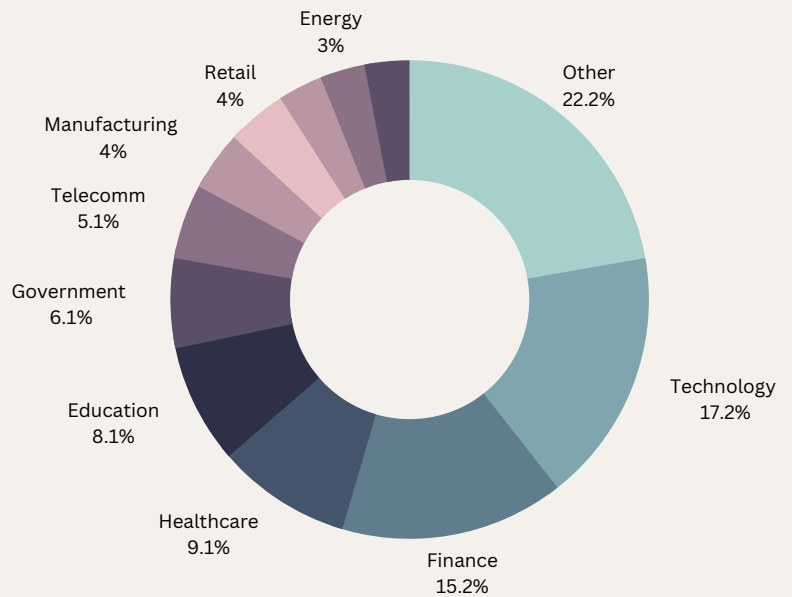
- Stephen Hawking

What is AI used for?

Artificial intelligence leverages computers and machines to mimic the problem-solving and decision-making capabilities of the human mind."

- IBM

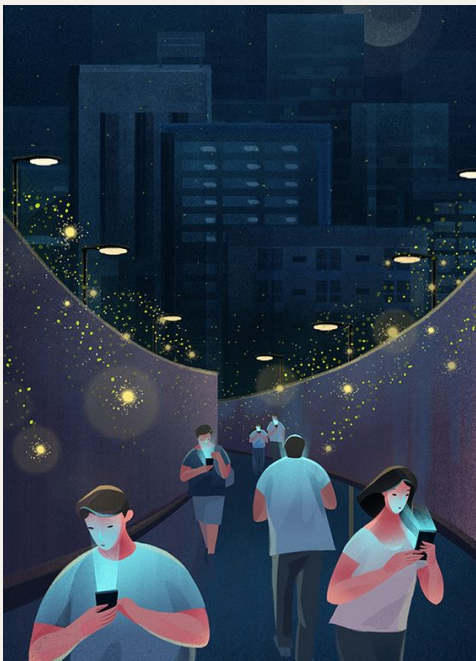
Breakdown of AI used in Industry



How do we use AI?

- Speech Recognition
- Virtual Assistance
- Recommendations
- Security
- Video analysis

Use in the Workplace



54% of executives say that implementing AI in their workplace has increased productivity.

38% of jobs in the United States are vulnerable to being lost to AI-powered technology

AI lacks human judgement, neutrality and connection when it comes to hiring, customer service and security.

84% of business executives think they need AI to achieve growth goals and objectives.

Use in Personal Life

Social Media and AI generation is biased like the minds that created it. It perpetuates discrimination.

95% of all customer interactions will be digital by 2025.



A study at UC Berkeley found that AI systems charged minority homeowners higher interest rate.

43% choose digital voice assistants because they are faster than type search

AI is not going anywhere. It is up to us to set rules and limitations for what AI can do. The White House just released an AI bill of rights that will hold systems accountable.